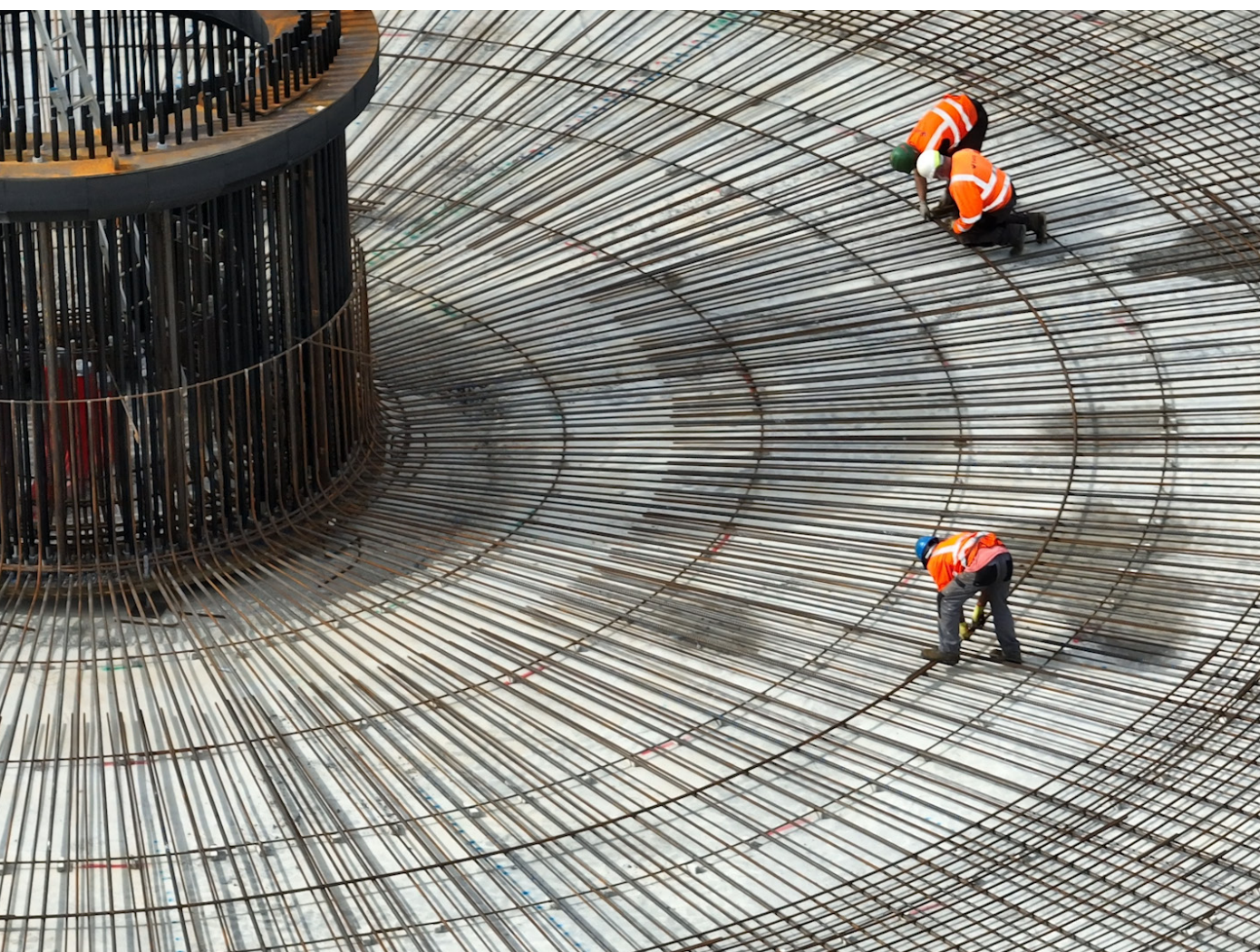
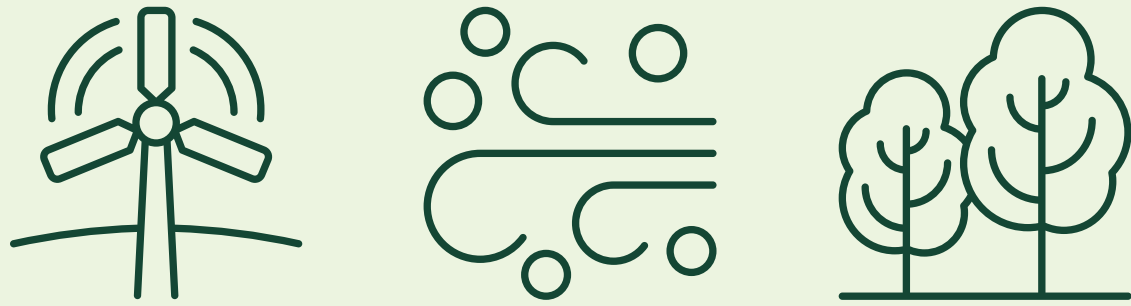


Derrinlough Wind Farm Project Newsletter

Winter 2023





Introduction

Dear Resident,

Welcome to our Winter 2023 newsletter.

Derrinlough Wind Farm is a 21-turbine development, in Derrinlough, Co. Offaly. The project received planning permission in late 2021. In February 2023 Bord na Móna commenced the main construction of the wind farm through our civil and electrical contractors BAM and H&MV. When completed, the wind farm will produce enough clean green energy to power approximately 68,000 homes annually.

Despite having had the wettest July on record, work has progressed well on site with the commencement of construction of the 21 turbine foundation bases, as well as progression of construction of the 110kv Substation.

Inside this newsletter edition, you will find information on the key project highlights to date, including detail on what is planned next as well as an update on our Derrinlough Wind Farm Construction fund. The Derrinlough Wind Farm Infrastructure and Amenity Layout Map is now available to the local community together with a Feedback Questionnaire. We welcome any comments, suggestions or additional information you would like to provide in relation to the Amenity plan.

We would also like to take this opportunity to remind you of our text messaging system, operational during the construction phase of the wind farm development to keep you informed of key project activities. If you would like to sign up to the text messaging system please visit: www.derrinloughwindfarm.ie to join. We would like to thank residents, community groups and local businesses for your continued co-operation and support during the construction phase of the Derrinlough Wind Farm.

Further newsletters will be circulated as the project progresses. In the meantime, if you have any queries in relation to the project, please contact our Community Liaison Officers Stephen on 087 3486624 or Enda on 087 0579141, or via email at derrinloughwindfarm@bnm.ie

Yours faithfully,

Derrinlough Wind Farm Communications Team



Construction Programme

Completed turbine foundation base

There have been several project highlights since our last newsletter including the construction of 21km of the internal windfarm roads, the construction of 15 of the 21 turbine base foundations and the commencement of installation of the internal radial ducting. There has also been huge progress on our substation site with both the building structures being completed and made weatherproof.

21km
of internal windfarm
roads constructed



Floated road construction toward Turbine 11.



Turbine excavation.



Substation site progress to date.

Substation progress

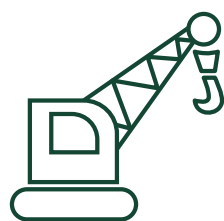
The construction of the substation buildings are now complete. In the compound, the plinths and concrete supports are almost complete at this stage allowing for the current phase of works.

The mechanical install has begun in earnest in the compound with the erection of the supporting steel work and insulators allowing for the air insulated electrical equipment and conductors to be installed.

Turbine foundations

Currently we have all of the 21 turbine bases open at various stages of construction. In early August we commenced pouring our 21 turbine foundations. These pours will continue over the next month and are due to be completed pre-Christmas.

During this period there will be, on occasion, an increased number of truck movements, delivering concrete to the site for our foundations works. The project team envisage that there will be minimal impact on local road users during this period. We will continue to keep residents updated on these deliveries via our dedicated text messaging system.



21

of the 21 turbine bases under construction



1

Construction of the turbine foundation reinforcement cage.



2

Construction of the bottom matt of reinforcement of turbine foundation base.



3

Completed steel cage ready for concrete pour.



4

Concrete base foundation pour ongoing at Turbine 06.



5

Finished concrete foundation waiting to be backfilled.



N62 Underpass works under construction, to provide an operational and amenity link between Drinagh and Clongawney bogs.

Underpass

Works have commenced on the construction of the underpass that will facilitate access between the Clongawney and Drinagh bog development area. This will enable amenity and operational access once the windfarm opens. This is a major piece of infrastructure on the project and one that will be a major benefit for all as it will allow access between Drinagh and Clongawney Bogs without having to cross the busy N62 road.

Route modifications works

As we prepare for the arrival of our turbines in the first half of 2024 there will be some preparatory works undertaken on the route to site to ensure the safe delivery of all the components. Minimal disruption is expected as most of the works are off the main local road. Modification works are complete around Tullamore from Tinny Cross roundabout to Mucklagh – there are some remaining works to be completed in and around the Kennedys Cross area over the next month.

Construction Fund

Derrinlough Wind Farm has launched a Construction Fund to facilitate the support of local community projects prior to the commencement of the Operational Community Benefit Fund. Should your local community project committee wish to apply for funding, please visit www.derrinloughwindfarm.ie to complete your application*.

Only one application per group, per year may be submitted. Applications will not be accepted from individuals.

For further details on the terms and conditions of the Fund please visit:

www.derrinloughwindfarm.ie

*Please note that submission of application does not guarantee funding. Requests are evaluated on a case-by-case basis.

What's next for the project



- All access tracks to be completed within the coming weeks.
- Construction of remaining Turbine foundations to be completed by year end.
- The laying of the main windfarm radial ducting across the site is ongoing.
- Substation civil works continue to progress with the erection of the supporting steel work and insulators allowing for the air insulated electrical equipment and conductors to be installed.
- Crane hardstand construction is ongoing. These hardstands facilitate the erection of wind turbine components.
- Underpass works on N62 will be completed to facilitate the operational and amenity use of the wind farm.

Stay updated

As part of our commitment to community engagement, we are keen to keep the local community and other interested parties up to date on developments of this project and, to provide opportunities to share feedback.

How to contact us

There are a number of ways you can contact us if you require further information about the Derrinlough Wind Farm.



Stephen



Enda

Call us

Contact our Community Liaison Officers

Stephen: 087 3486624 • **Enda:** 087 0579141

Email us

derrinloughwindfarm@bnm.ie

Website

www.derrinloughwindfarm.ie

Write to us

Bord na Móna Renewable Energy,
Main Street, Newbridge, Co. Kildare.

If you haven't done so already but would like to receive project news you may request to receive updates in the following ways:

Post

Join our mailing list by visiting
www.derrinloughwindfarm.ie
and complete the short sign-up form.

Text

Join our text message alert system by visiting
www.derrinloughwindfarm.ie and complete
the short sign-up form.

Bord na Móna

A decorative graphic at the bottom of the page consisting of numerous thin lines radiating from the bottom left towards the top right. The lines are in two colors: a vibrant green and a light grey, creating a sunburst or fan-like effect.